



Public Health  
England

# A new infection has been detected in Wuhan, China

(Novel Coronavirus)

If you have been to Wuhan, China, in the last 14 days and develop **ANY** of these symptoms, contact a healthcare professional

**Any of ....**



**Cough**



**Runny  
nose**



**Sore  
throat**



**Fever**



**Difficulty  
breathing**

If you develop symptoms within 14 days of leaving China, contact a healthcare professional for free advice and treatment, by calling NHS 111 or your GP, and tell them that you have travelled to Wuhan.



Public Health  
England

# 一种新型感染在中国武汉被发现

(新型冠状病毒)

如果您在过去14天内去过中国武汉,并且出现上述任何症状之一,请与医疗保健专业人员联系。

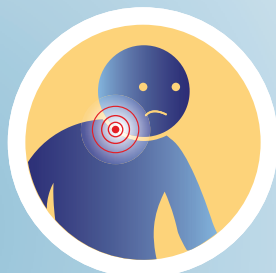
任何之一...



咳嗽



流鼻涕



喉咙疼



发烧



呼吸困难

如果您在离开中国后的14天内出现症状,请致电NHS111或您的全科医生,与医疗保健专业人员联系以获取免费建议和治疗,并告诉他们您曾去过武汉。